



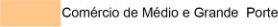

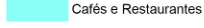


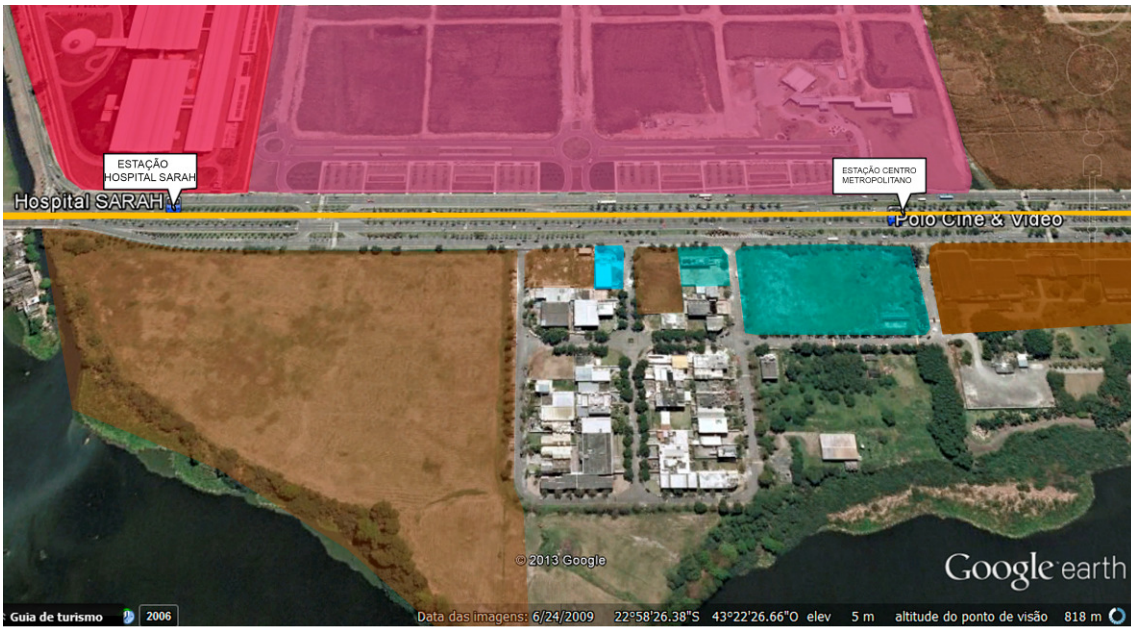


3



- | | | |
|---|--|---|
|  Galeria Comercial |  Serviço Saúde |  Novos Empreendimentos imobiliários |
|  Comércio de Combustíveis e transporte |  Comércio de Médio e Grande Porte |  Serviço de Educação |
|  Cafés e Restaurantes |  Transcarioca |  ESTAÇÃO |

4 e 5



- | | | |
|--|---|---|
|  SERVIÇO DE SAÚDE |  GALERIA COMÉRCIAL |  VAZIOS |
|  TRANSCARIOCA |  SERVIÇO PÚBLICO |  NOVOS EMPREENDIMENTOS |
|  ESTAÇÃO | | |